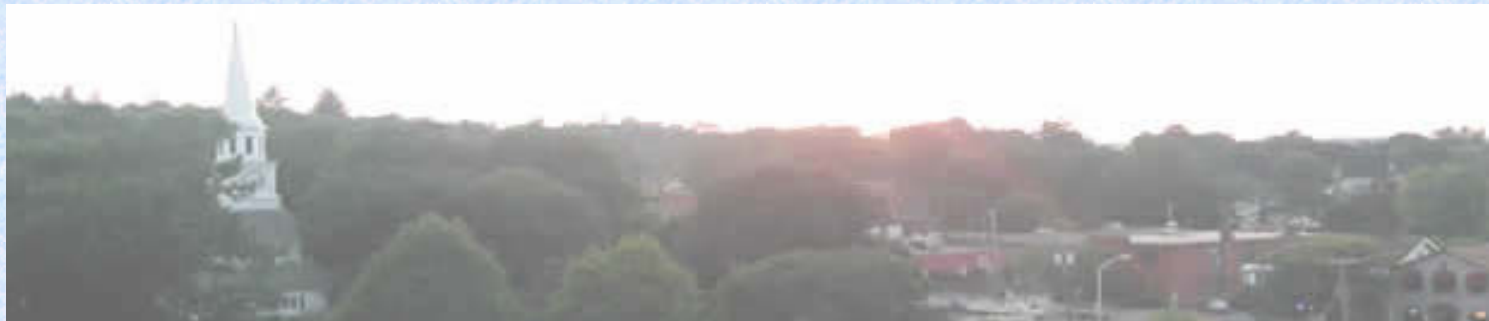


Town *of* New Hartford

Oneida County, New York

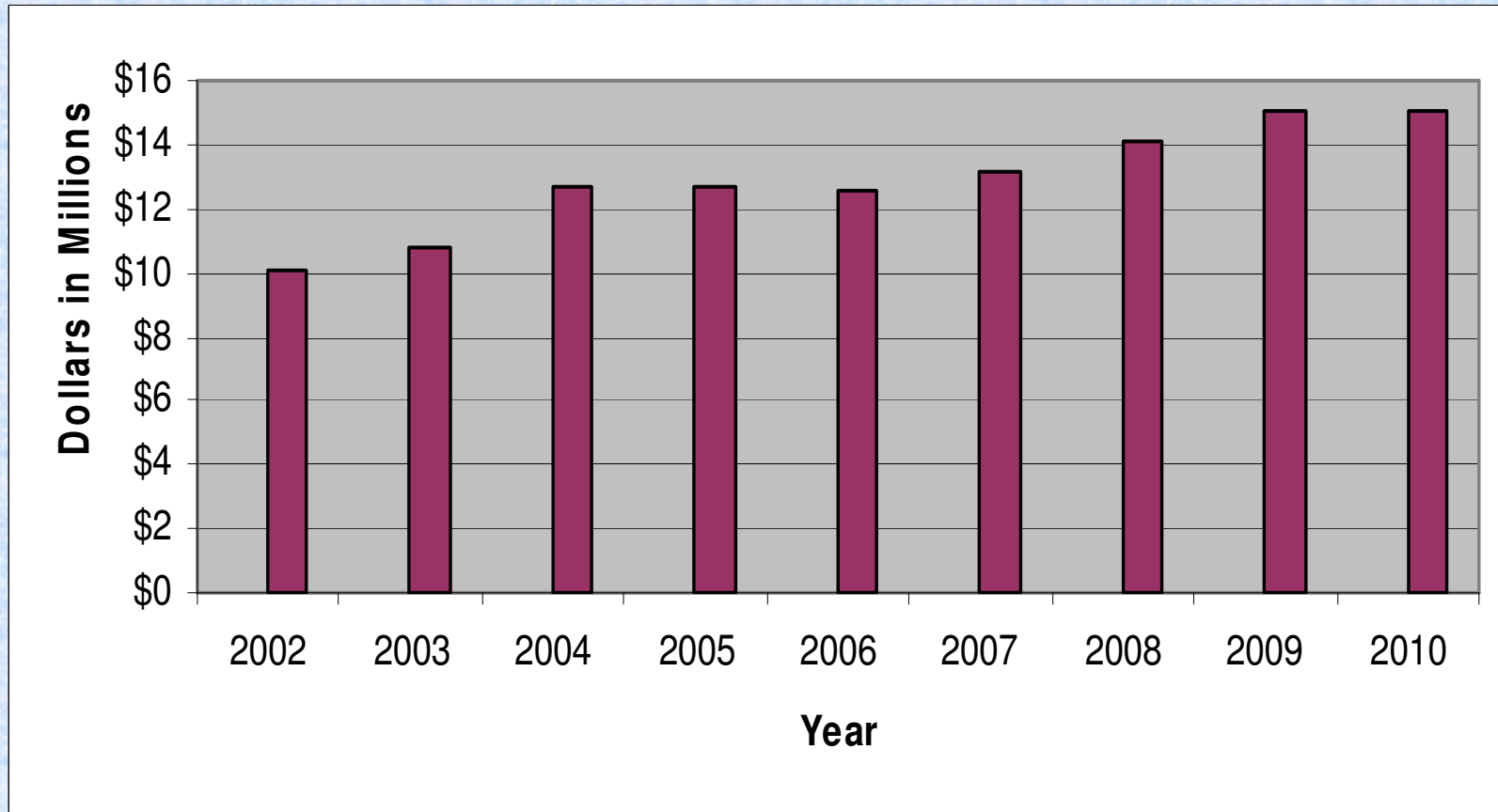
Town Budget 2010



Town Wide Budget

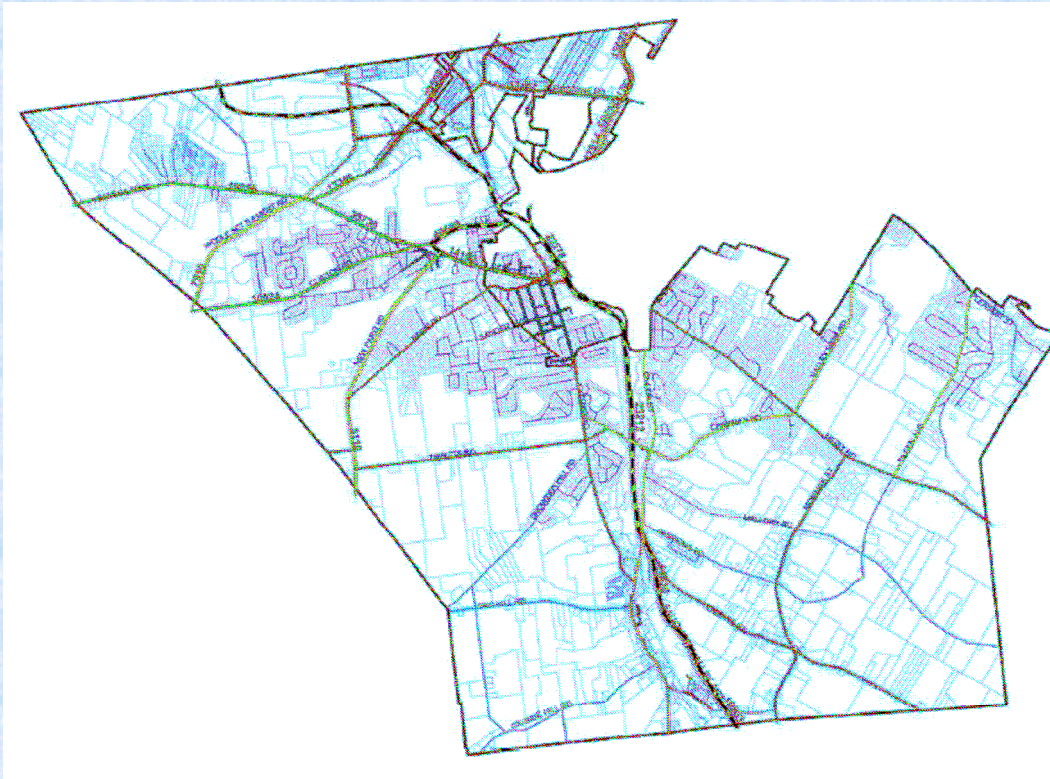
Total Revenue 2002 – 2010

Including Property Taxes



* 2010 Tentative Revenue

Town Tax Rate 2001 - 2010



* 2010 Tentative Tax Rate

2010 – 3.38*

2009 – 2.19

2008 – 2.11

2007 – 2.05

2006 – 2.01

2005 – 1.91

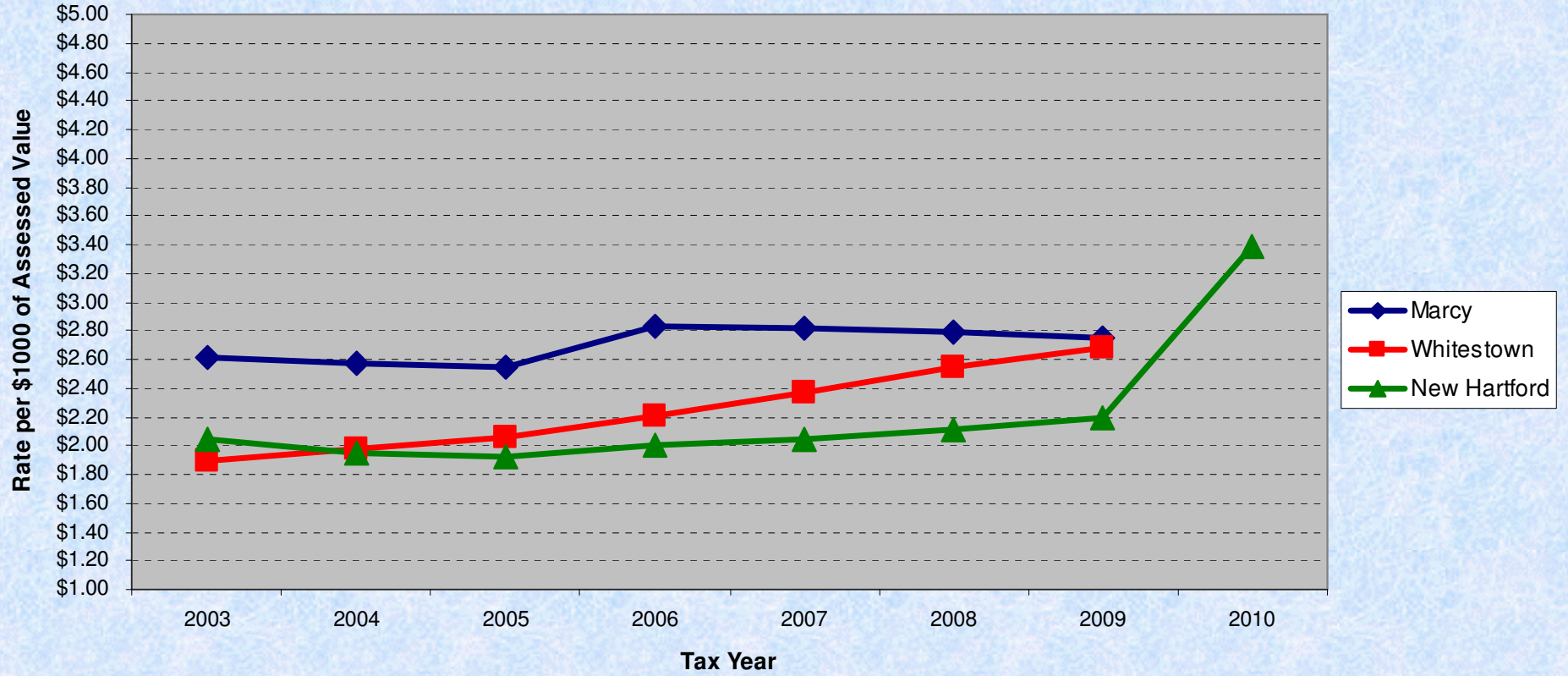
2004 – 1.95

2003 – 2.05

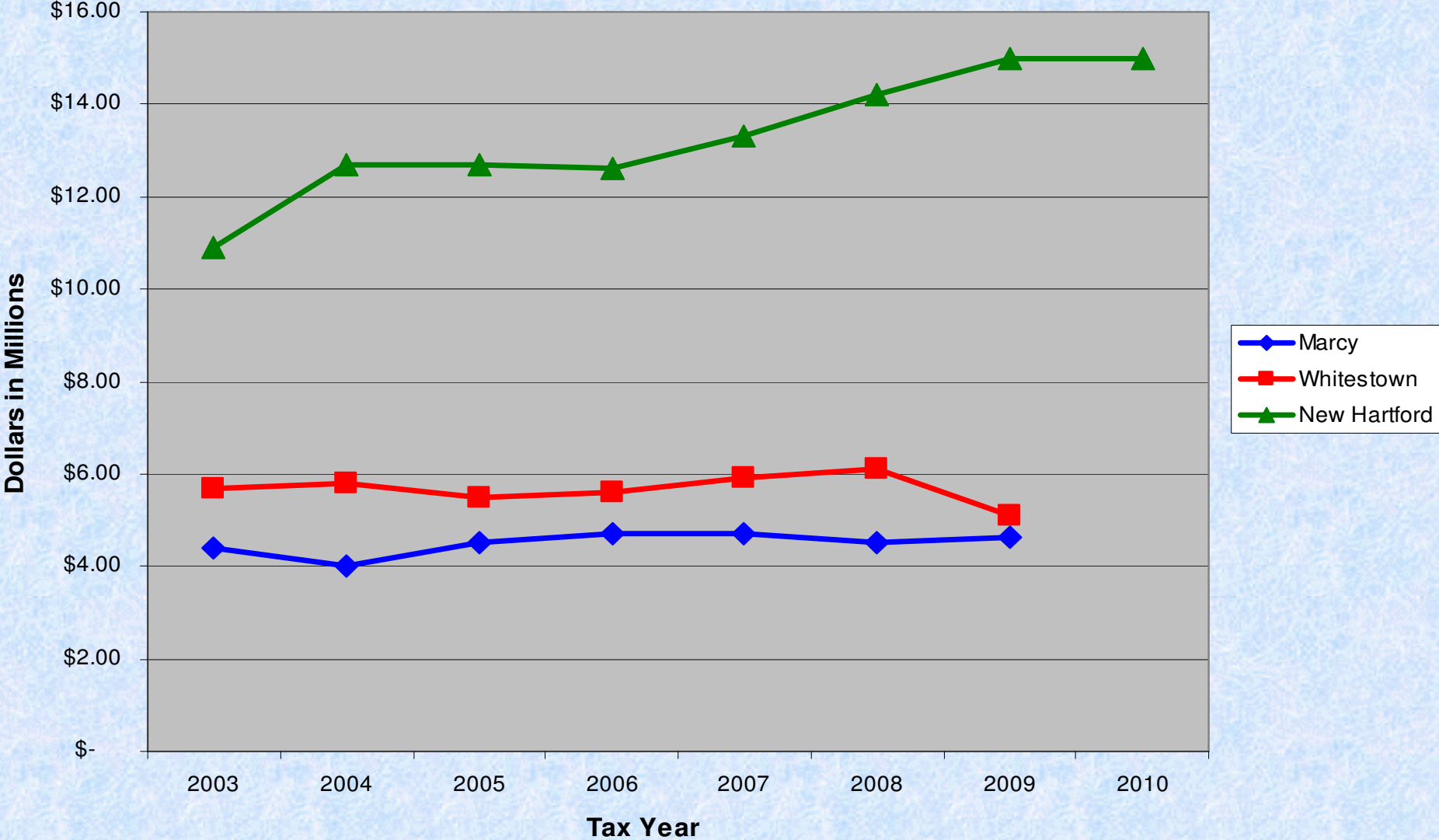
2002 – 1.98

2001 – 2.00

Local Town Tax Rates



Comparable Town Budgets in Oneida County



Town of New Hartford
Average Property Assessment
\$150,000

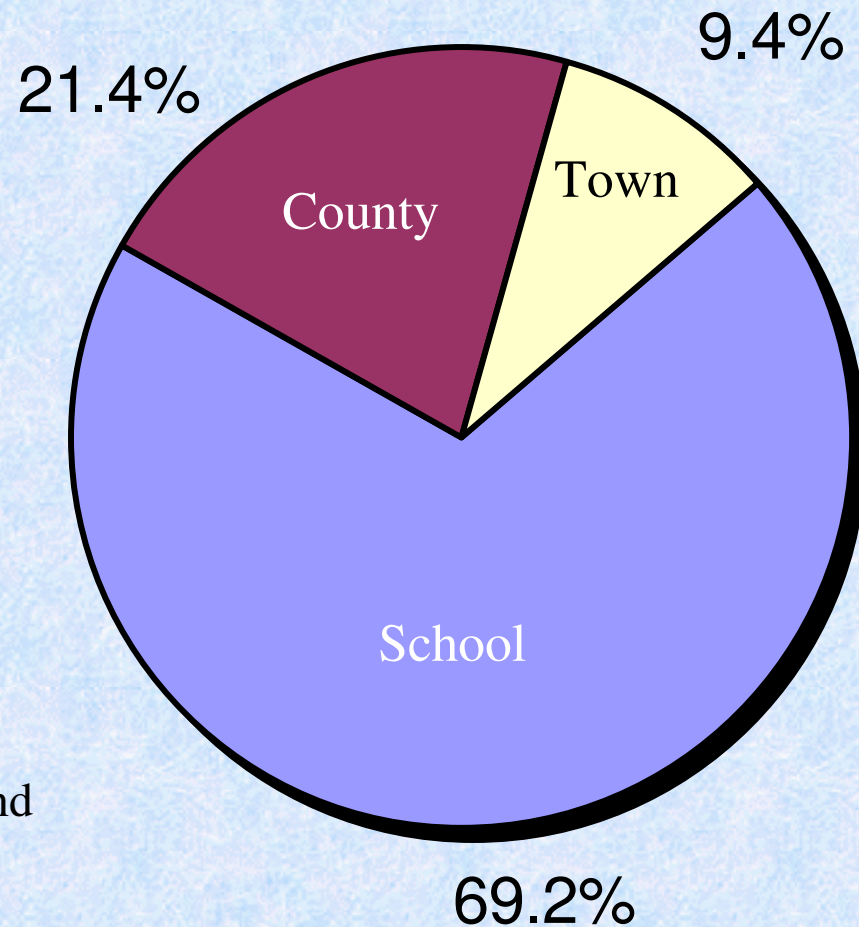


2009 Town Property Tax = \$328.50

2010 Town Property Tax = \$507.00

Increase in 2010 of \$178.50

Property Tax Bill for a New Hartford Town Resident in 2009-2010



Total Taxes 2009-2010

School Tax = \$24.78 per thousand

County Tax = \$7.65 per thousand

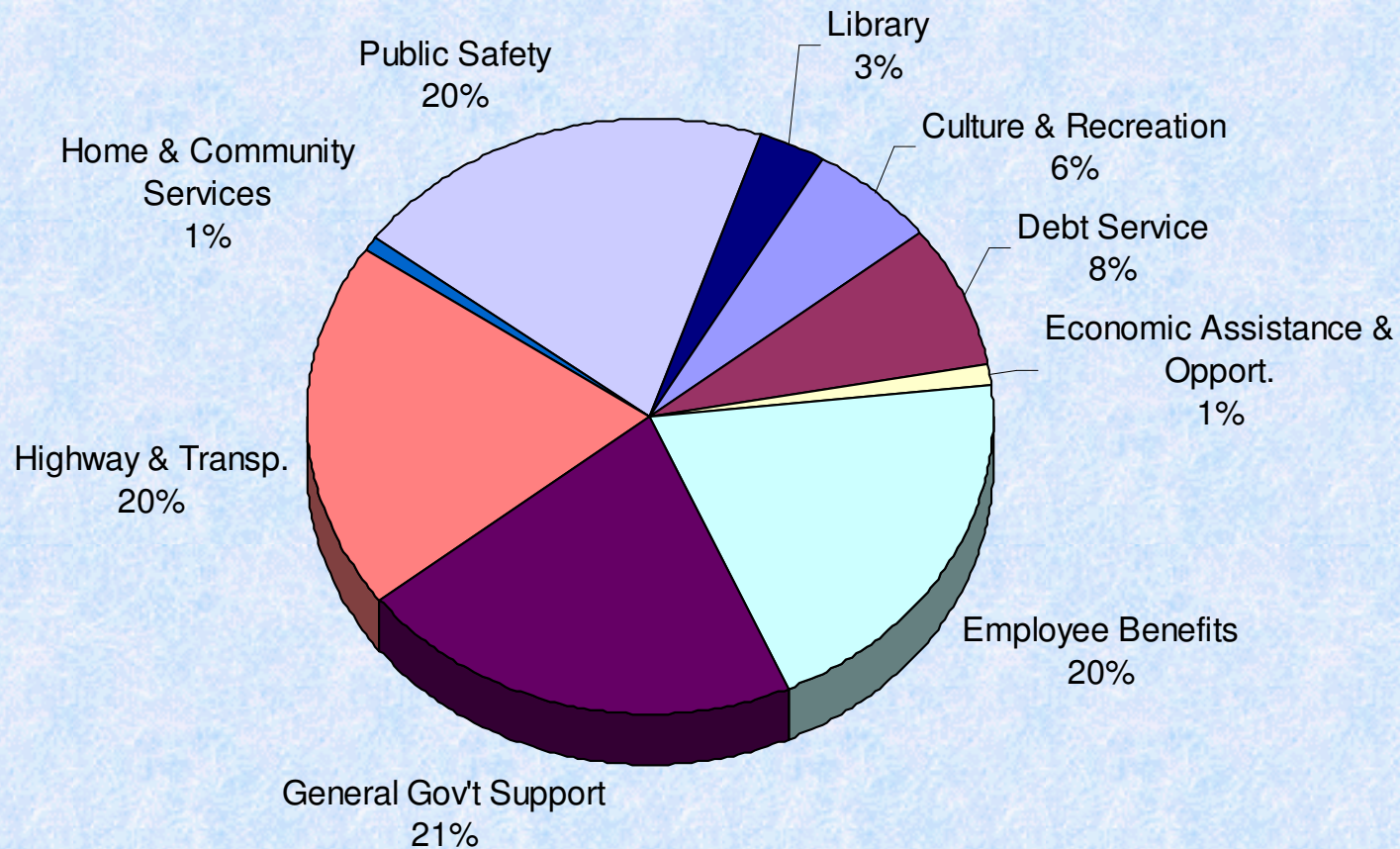
Town Tax = \$3.38 per thousand

Total Property Tax = \$35.81 per thousand

2010 Town Budget Summary

2010 Tentative Budget Appropriations

General and Highway Funds

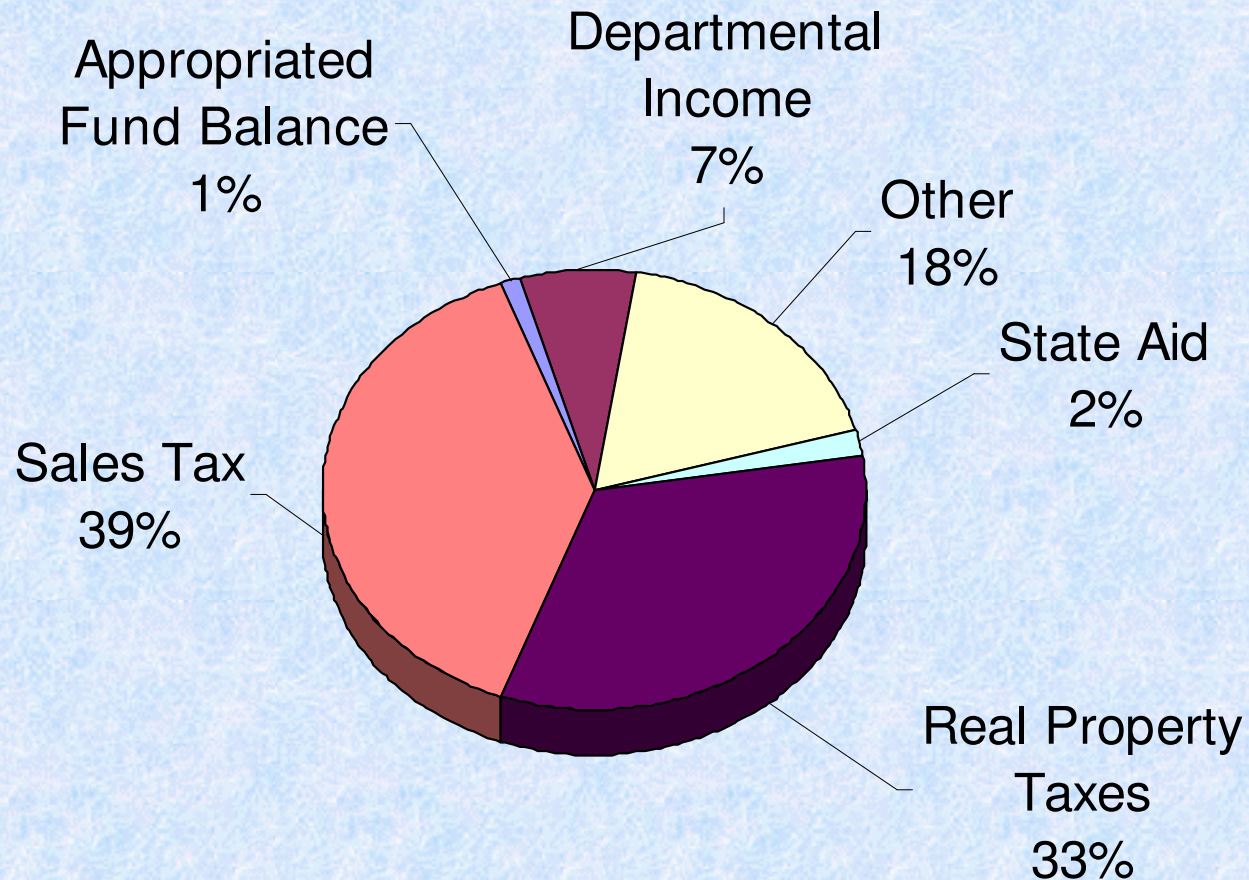


Total Appropriations = \$12,822,322

Town of New Hartford

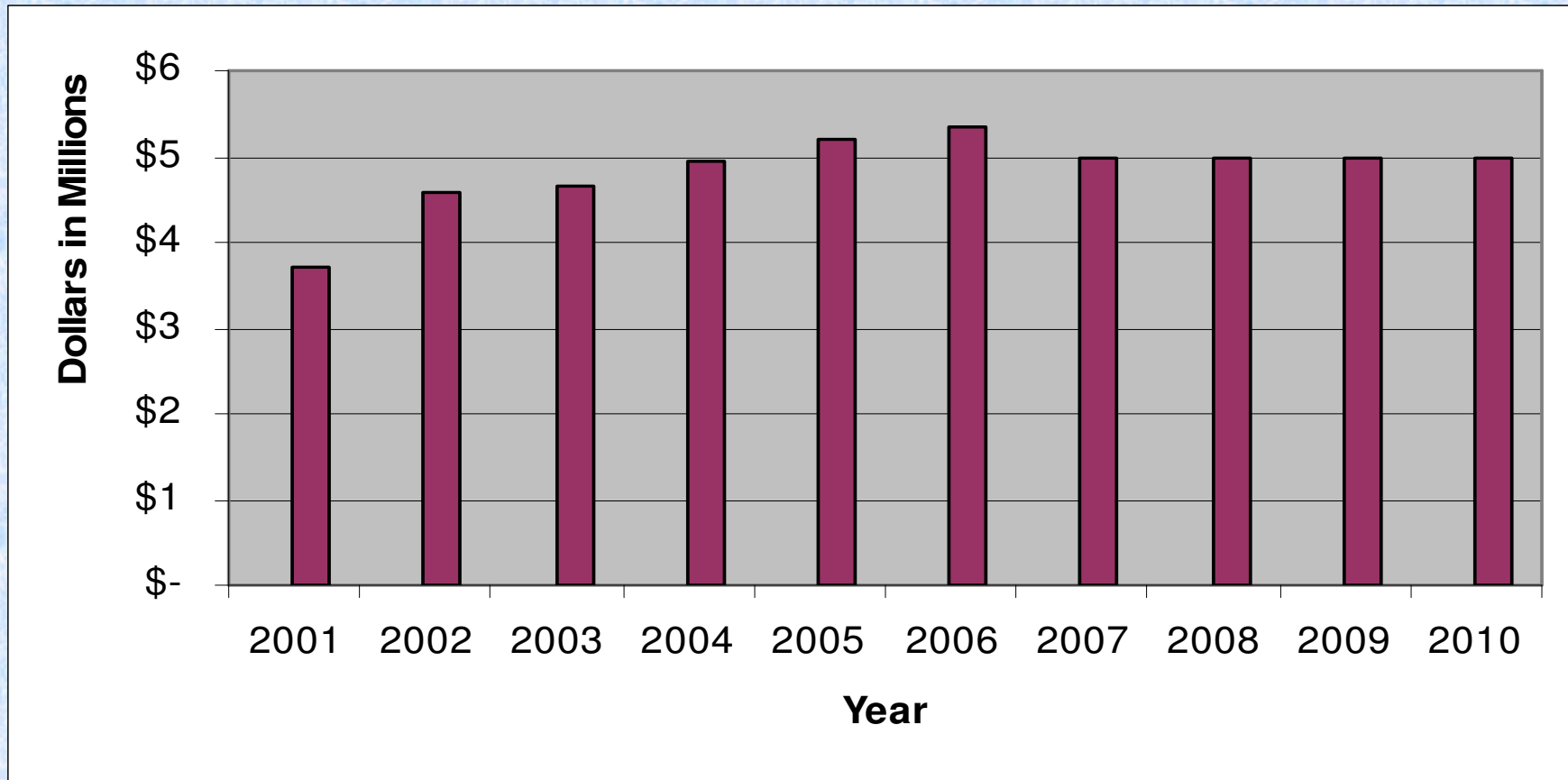
Estimated Town Revenue Sources

General and Highway Funds 2010



Total Appropriations = \$12,822,322

Sales Tax Revenue



* 2009 and 2010 Estimated Sales Tax Revenue

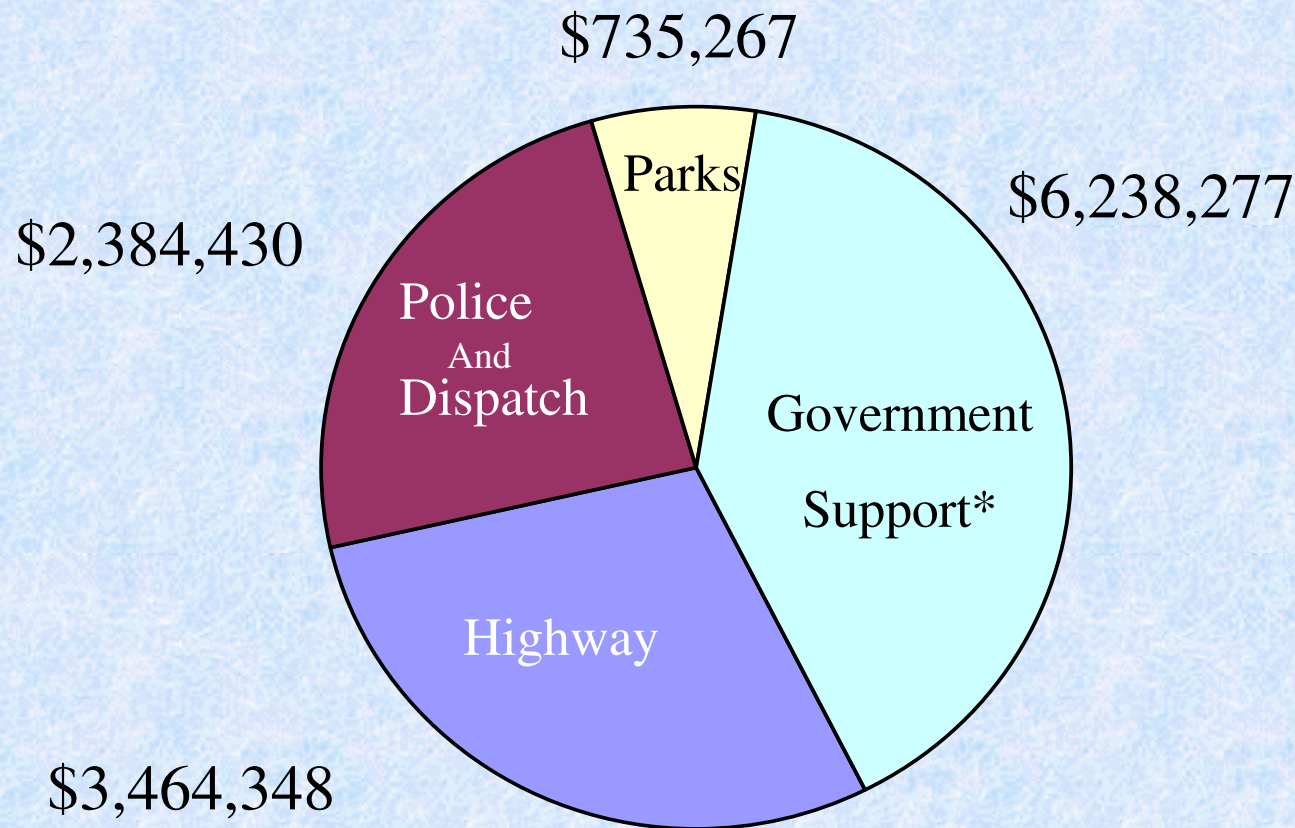
Town of New Hartford Major Estimated Revenue Generated by Department 2010

Highway	\$299,510
Police	\$248,202
Parks	\$237,800
Courts	\$170,000
Town Clerk	\$ 99,130
Codes	\$ 93,350

Town of New Hartford

Appropriation by Department

General and Highway Funds 2010



*Includes the Following

- Town Board
- Courts
- Comptroller
- Assessor
- Town Clerk
- Town Attorney
- Personnel
- Engineering
- Registrar
- Zoning
- Planning
- Water
- Fire
- Sewer
- Lighting
- Debt
- Employee Benefits

Total Appropriations = \$12,822,322

Town of New Hartford Full Time Employees 2004 - 2010



2010...	90*
2009...	88
2008...	86
2007...	87
2006...	86
2005...	85
2004...	87

*2010 Tentative Number of Full Time Employees

- Employee Numbers are based on the first full payroll of that given year

Town of New Hartford Commercial Development 2001 - 2009

Year	Permits Issued	Construction Value
2001	54	\$21,157,514
2002	63	\$9,467,120
2003	76	\$8,597,796
2004	87	\$10,982,984
2005	85	\$15,974,265
2006	79	\$5,980,135
2007	64	\$25,853,140
2008	61	\$13,004,939
2009	37*	\$2,523,725

* Permits Issued January to September 25, 2009

Town of New Hartford Residential Development 2002 - 2009

Year	Permits Issued	Construction Value
2002	72	\$6,872,569
2003	77	\$6,394,730
2004	34	\$6,097,739
2005	50	\$8,035,064
2006	62	\$7,703,872
2007	46	\$8,361,695
2008	26	\$3,965,316
2009	17*	\$3,253,000

* Permits Issued January to September 25, 2009